

bagpipe.tex quick reference

grx; x=N,a,b,c,d,e,f,g,h(new scheme) echox themx

4 dblr 5 hdbl

6 tdbl 7 sdbl

8 shdbl 9 shkdbld 10 shtdbld 11 thrwd grip dgrip Ngrip

12 taor dtaor Ntaor ahtaor thwrf gripthrwd hgripthrwd 13 whrl sbirl wbirl tbirl 14 slurx or slapx

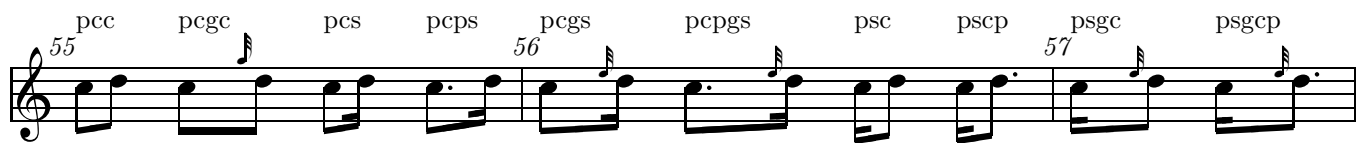
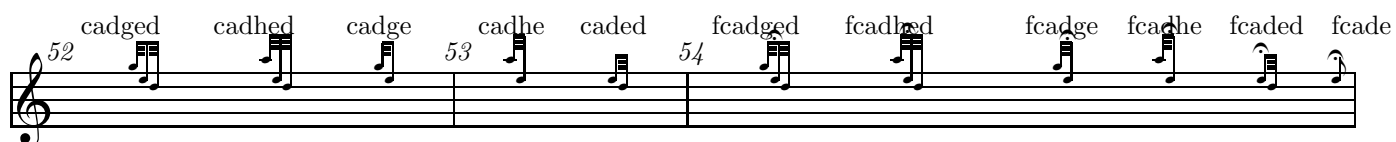
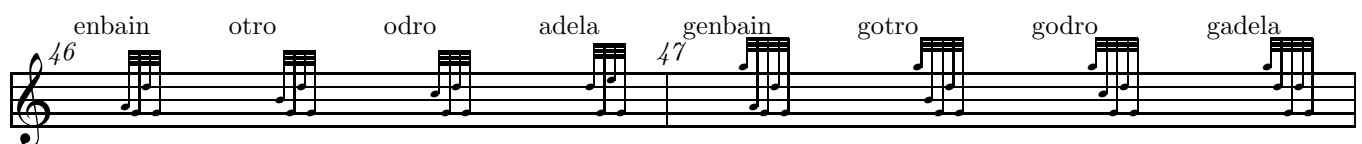
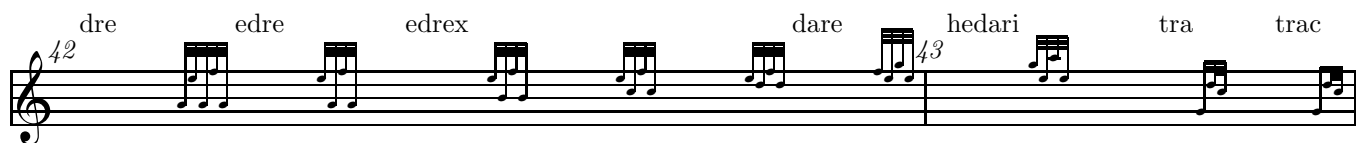
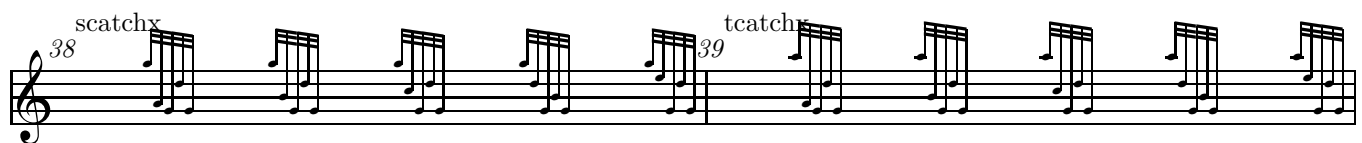
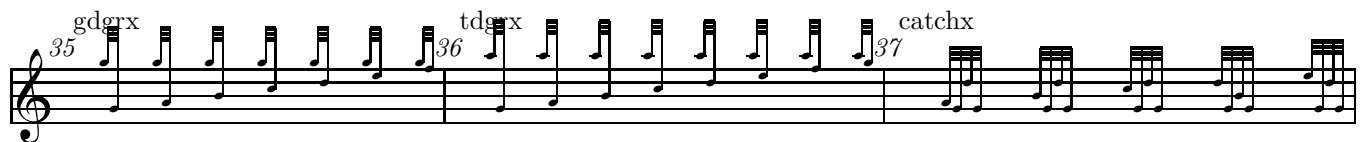
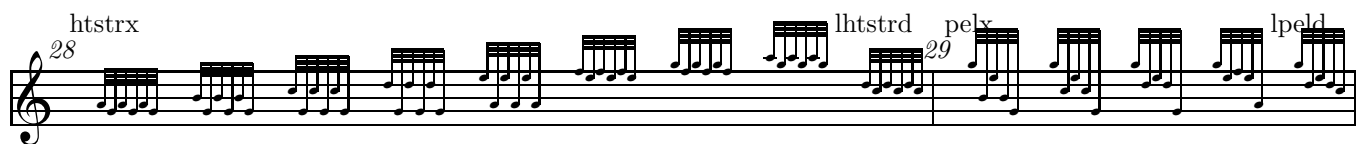
15 hslurx 16 tslurx 17 shkx 18 hshkx 19

20 tshkx 21 dstrx 22 ldstrd gdstrx lgdstrd

23 tdstrx 24 ltdstrd hdstrx lhdstrd

25 tstrx 26 ltstrd gtstrx lgtstrd

27 ttstrx lttstrd



58 pss psgs pst pspt 59 psgt pspgt pts ptsp 60 ptgs ptgsp

61 bdd; d=c,s,t 62 63 64 bddd; d=c,s,t 65

66 67 68 69

70 71 72 bdddd; d=c,s,t 73

74 75

76 77 78 79

80 81 82 83

84 85 86 87

88 89 90 91

92 93 94 95

96 97 whx 98 hx 99 qlx

100 cx 101 sx 102 tx 103 sfx

104 bx 105 bxp 106 hp x, qlp x, cp x, sp x, tp x, sfp 107 app x, qlpp x, cpp x

The image shows a musical score for two staves. The top staff contains measures 100 through 103. Measure 100 is marked 'cx' and contains a series of eighth notes. Measure 101 is marked 'sx' and contains a series of eighth notes. Measure 102 is marked 'tx' and contains a series of eighth notes. Measure 103 is marked 'sfx' and contains a series of eighth notes. The bottom staff contains measures 104 through 107. Measure 104 is marked 'bx' and contains a series of eighth notes. Measure 105 is marked 'bxp' and contains a series of eighth notes. Measure 106 is marked 'hp x, qlp x, cp x, sp x, tp x, sfp' and contains a series of eighth notes. Measure 107 is marked 'app x, qlpp x, cpp x' and contains a series of eighth notes. The notation includes eighth and sixteenth notes, some with beams, and rests. Measure 107 ends with a double bar line.