

# bagpipe.tex quick reference

grx; x=N,a,b,c,d,e,f,g,h(new scheme)      echox      themx

4      dblr      5      hdbl

6      tdbl      7      sdbl

8      shdbl      9      shkdbld      10      shtdbld      11      thrwd      grip      dgrip      Ngrip

12      taor      dtaor      Ntaor      ahtaor      thwrf      gripthrwd      hgripthrwd      13      whrl      sbirl      wbirl      tbirl      14      slurx or slapx

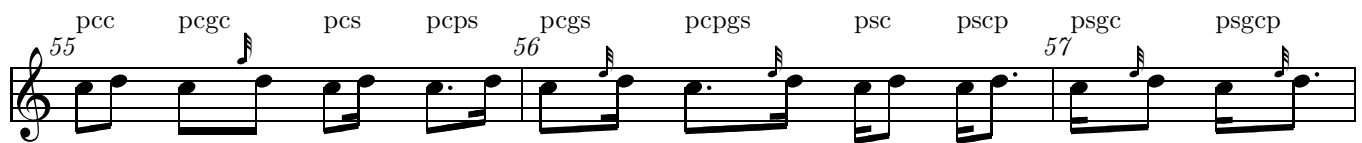
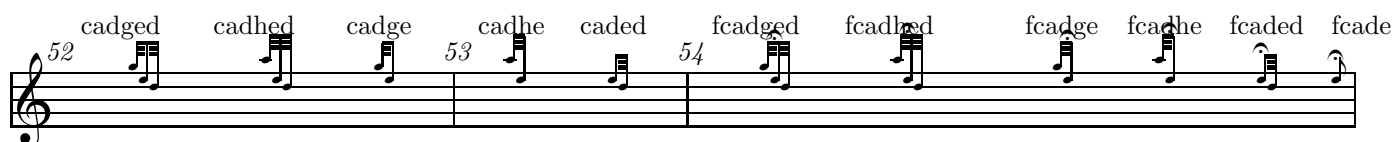
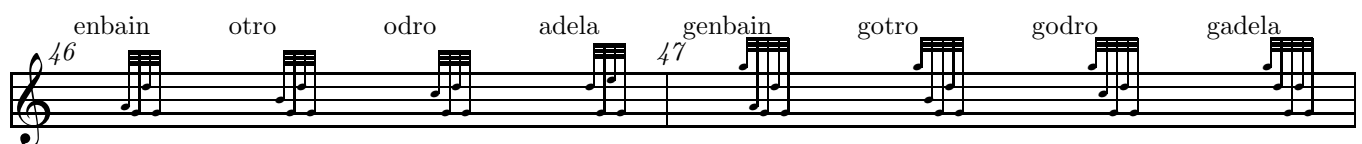
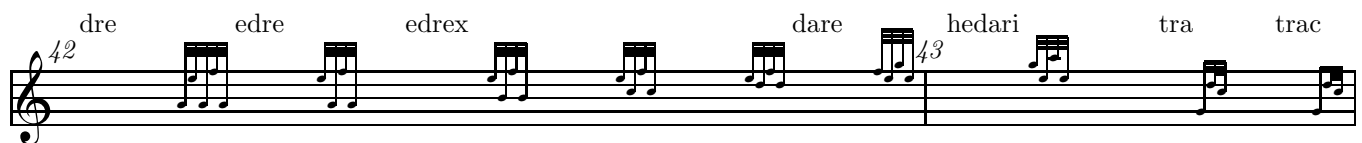
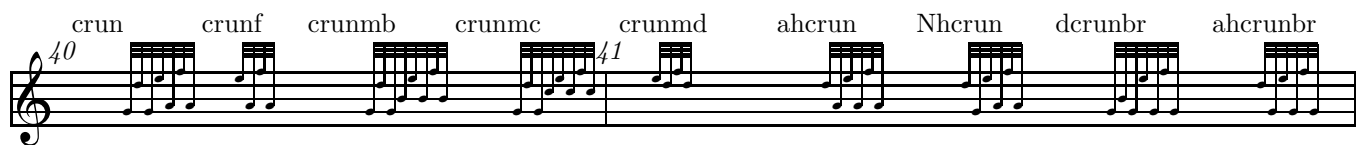
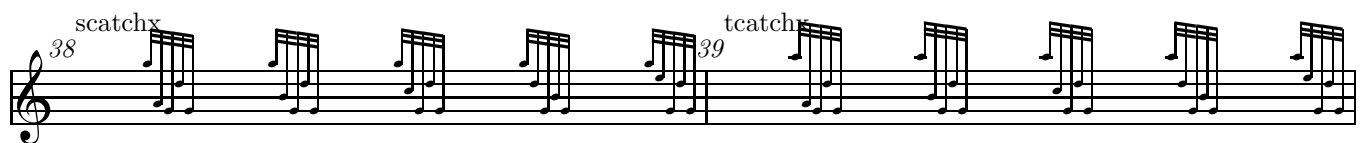
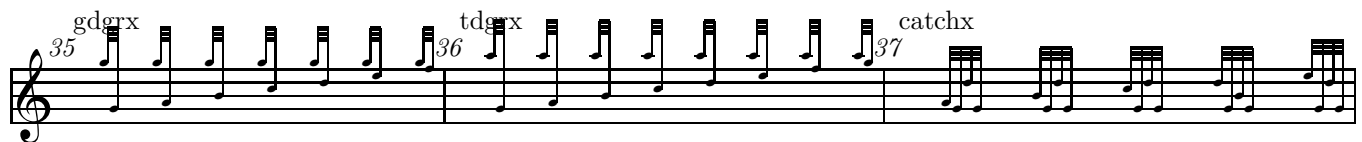
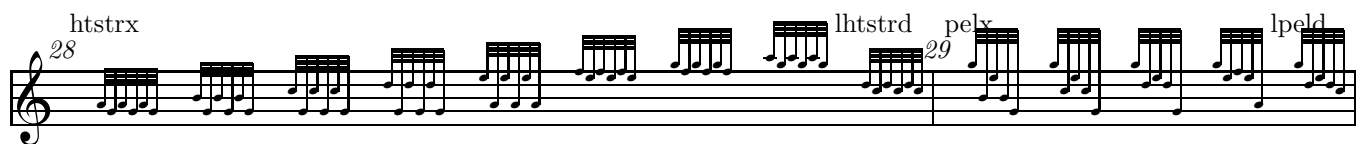
15      hslurx      16      tslurx      17      shkx      18      hshkx      19

20      tshkx      21      dstrx      22      ldstrd      gdstrx      lgdstrd

23      tdstrx      24      ltdstrd      hdstrx      lhdstrd

25      tstrx      26      ltstrd      gtstrx      lgtstrd

27      ttstrx      lttstrd



58 pss psgs pst pspt 59 psgt pspgt pts ptsp 60 ptgs ptgsp

61 bdd; d=c,s,t 62 63 64 bddd; d=c,s,t 65

66 67 68 69

70 71 72 bdddd; d=c,s,t 73

74 75

76 77 78 79

80 81 82 83

84 85 86 87

88 89 90 91

92 93 94 95

96 97 whx 98 hx 99 qlx



100 cx 101 sx 102 tx 103 sfx

104 bx 105 bxp 106 hp x, qlp x, cp x, sp x, tp x, sfp 107 app x, qlpp x, cpp x

The image shows a musical score for two staves. The top staff contains measures 100 to 103, and the bottom staff contains measures 104 to 107. The notation includes various musical symbols such as notes, rests, and dynamic markings. The measures are numbered 100 through 107. The top staff has measures 100, 101, 102, and 103. The bottom staff has measures 104, 105, 106, and 107. The notation includes various musical symbols such as notes, rests, and dynamic markings. The measures are numbered 100 through 107. The top staff has measures 100, 101, 102, and 103. The bottom staff has measures 104, 105, 106, and 107. The notation includes various musical symbols such as notes, rests, and dynamic markings. The measures are numbered 100 through 107.